



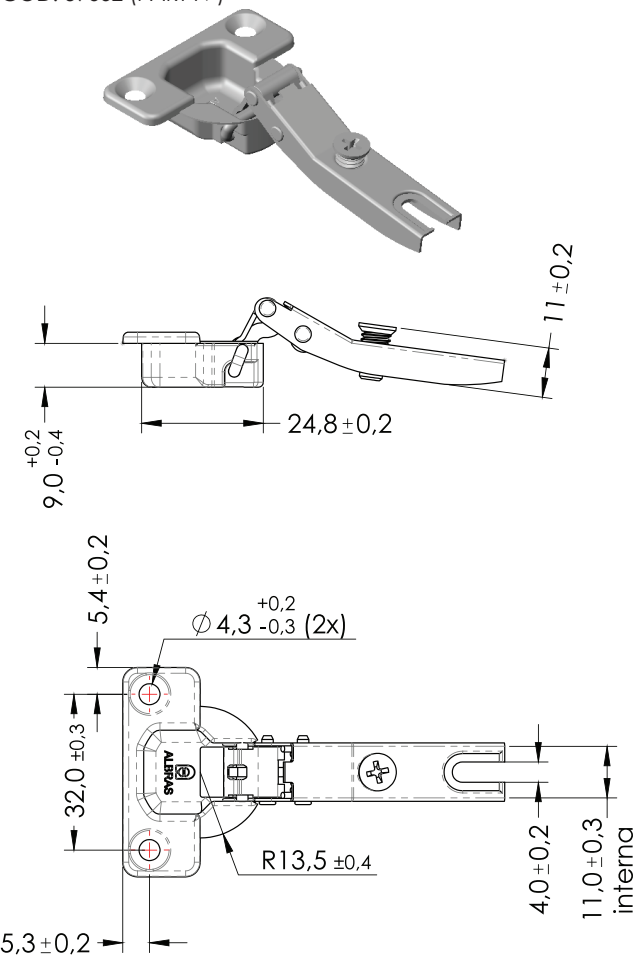
# **HINGES (26MM)**

## **DOBRADIÇAS 26MM**

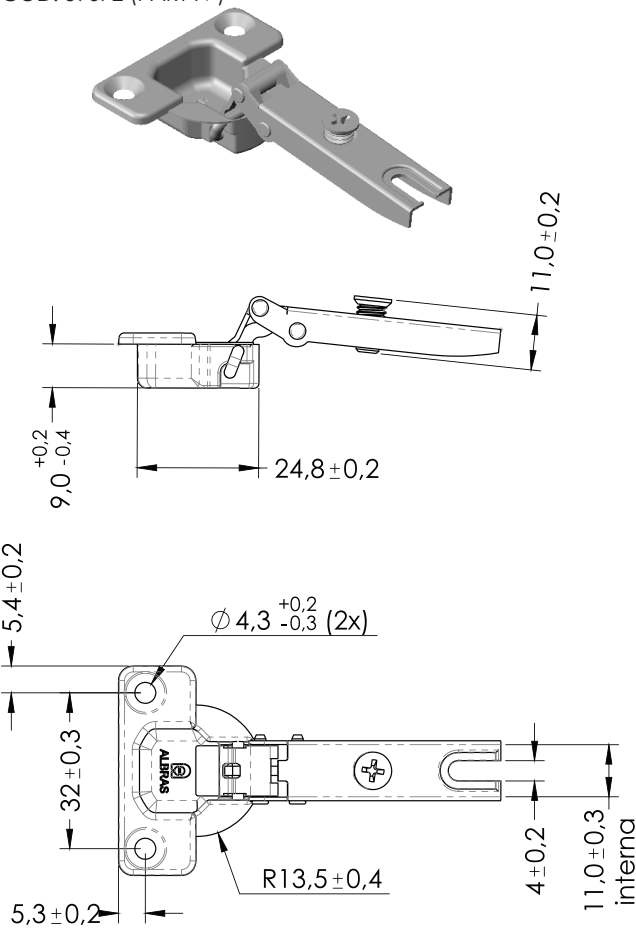
TECHNICAL DATA SHEET  
DADOS TÉCNICOS

TECHNICAL DRAWING  
DESENHO TÉCNICO

COD: 59662 (PART N°)

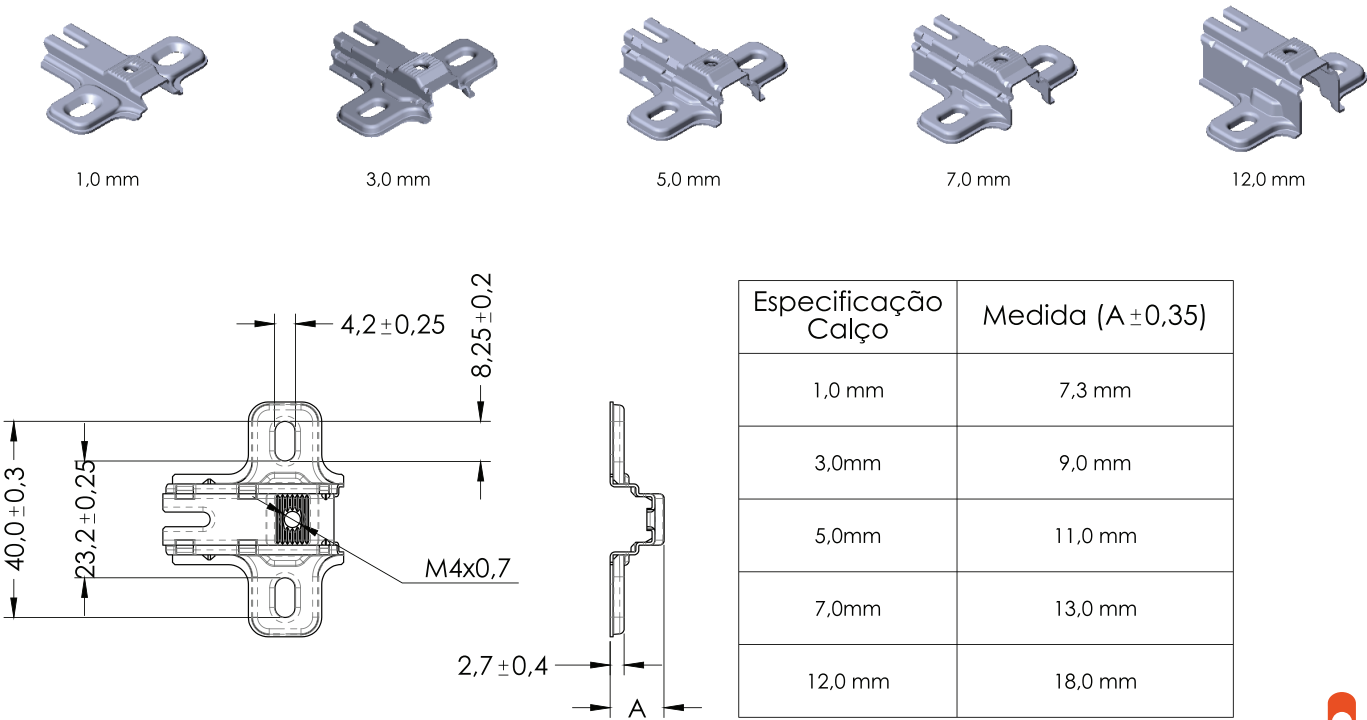


COD: 59672 (PART N°)



PLATES TECHNICAL DRAWING  
DESENHO TÉCNICO DOS CALÇOS

COD: 53712 (PART N°) COD: 54002 (PART N°) COD: 54012 (PART N°) COD: 54022 (PART N°) COD: 53962 (PART N°)

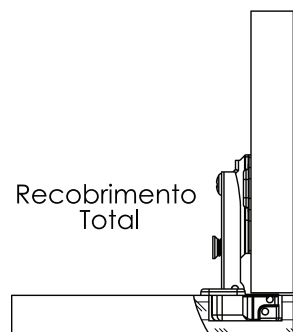


Especificação Calço	Medida (A $\pm 0,35$ )
1,0 mm	7,3 mm
3,0mm	9,0 mm
5,0mm	11,0 mm
7,0mm	13,0 mm
12,0 mm	18,0 mm

# MOUNTING OPTIONS OPÇÕES DE MONTAGEM

AL2 Modul Baixa  
calço 1mm

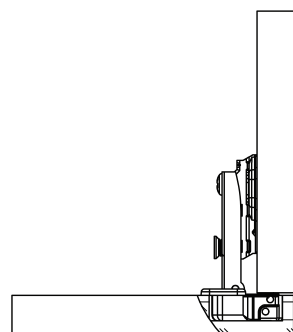
COD: 59672 + 53712  
(PART N°)



FULL OVERLAY

AL2 Modul Baixa  
calço 3mm

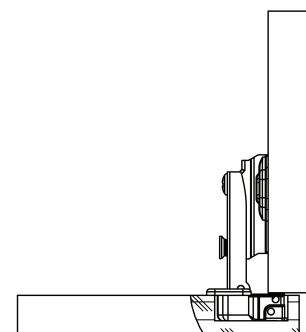
COD: 59672 + 54002  
(PART N°)



2

AL2 Modul Baixa  
calço 5mm

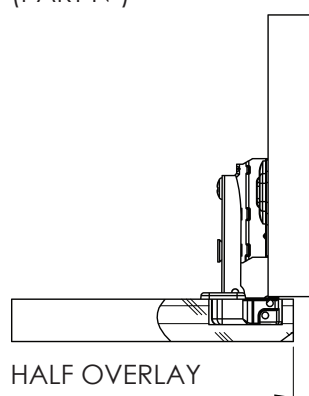
COD: 59672 + 54012  
(PART N°)



4

AL2 Modul Baixa  
calço 7mm

COD: 59672 + 54022  
(PART N°)

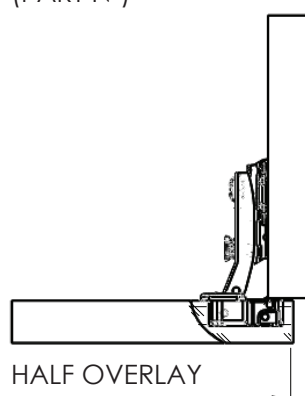


HALF OVERLAY

6

AL2 Modul Alta  
calço 3mm

COD: 59662 + 54002  
(PART N°)

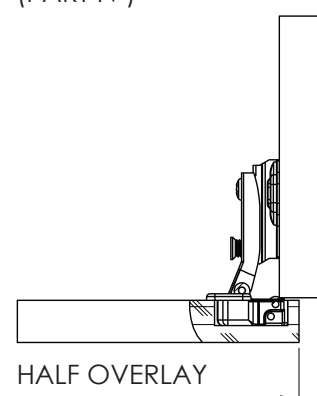


HALF OVERLAY

6

AL2 Modul Alta  
calço 5mm

COD: 59662 + 54012  
(PART N°)

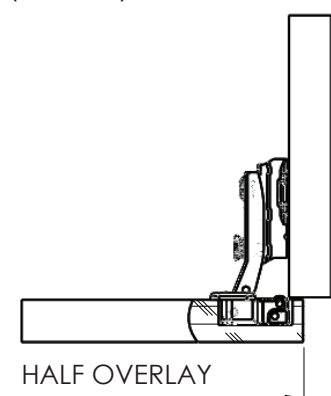


HALF OVERLAY

8

AL2 Modul Alta  
calço 7mm

COD: 59662 + 54022  
(PART N°)

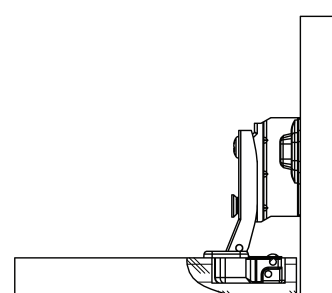


HALF OVERLAY

10

AL2 Modul Alta  
calço 12mm

COD: 59662 + 53962  
(PART N°)

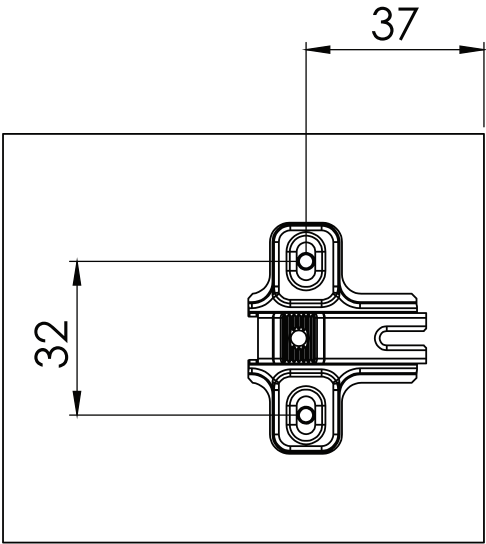


INSET DOOR

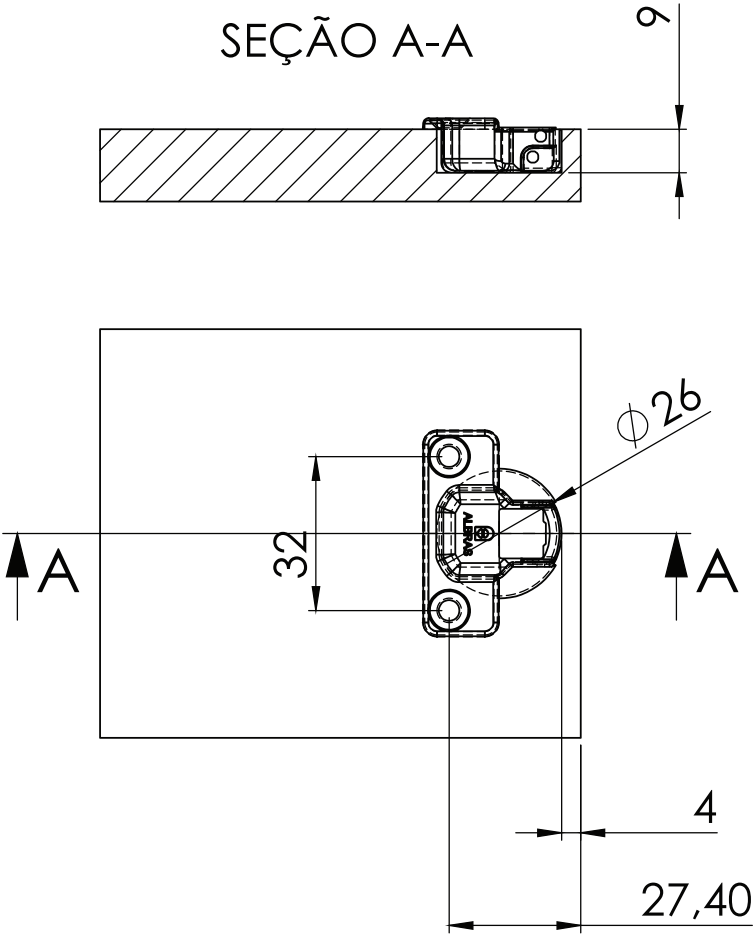
Embutido

DRILLING PATTERNS (MM)  
FURAÇÕES

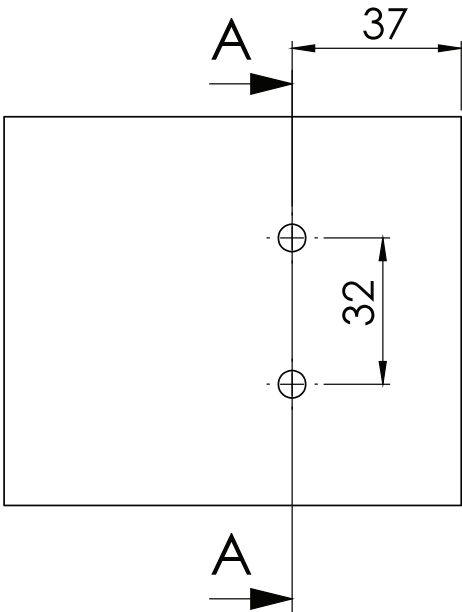
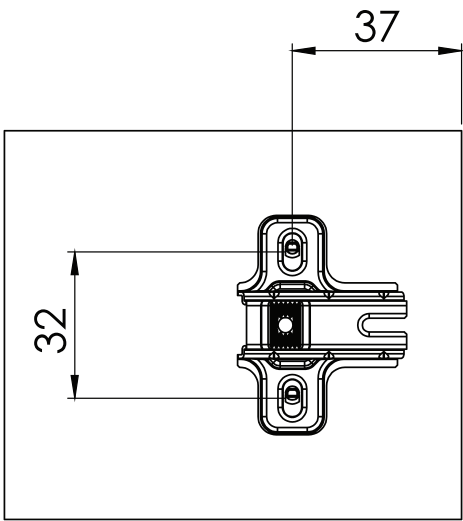
PLATE INSTALLATION  
FURAÇÃO DO CALÇO



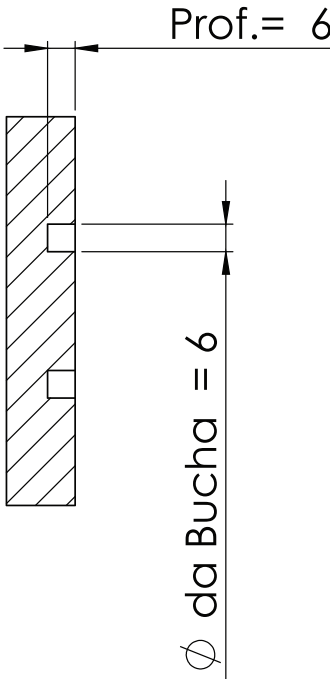
CUP INSTALLATION  
FURAÇÃO DA CANECA



PRE-MOUNTED EXPANDO DOWELS  
CALÇOS EXPANDO

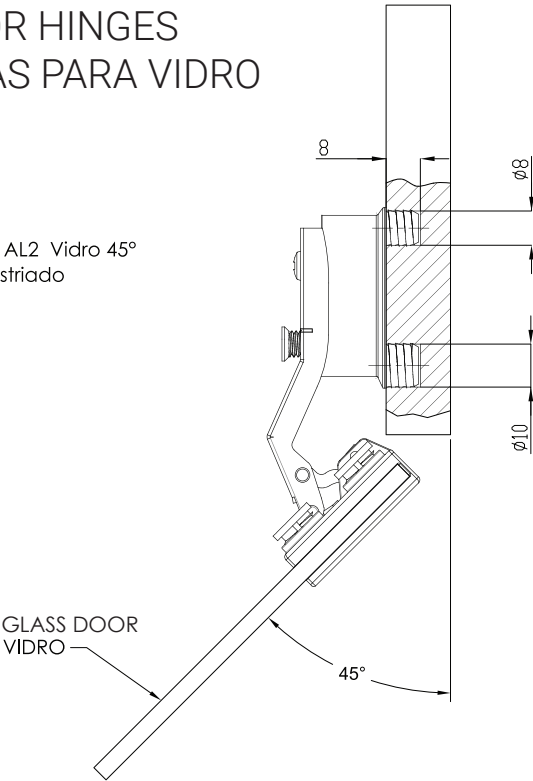


SEÇÃO A-A

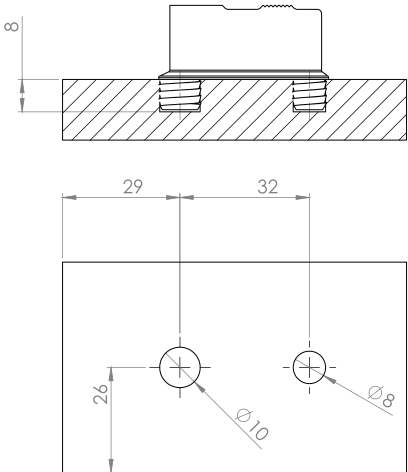


SPECIAL HINGES  
GLASS DOOR HINGES  
DOBRADIÇAS PARA VIDRO

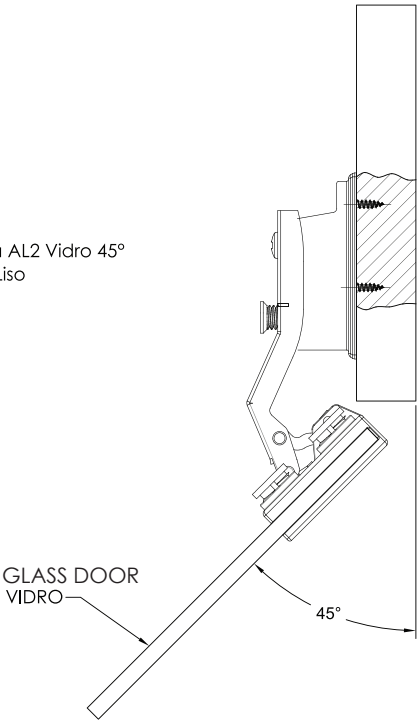
Dobradiça AL2 Vidro 45°  
C/ Calço Estriado



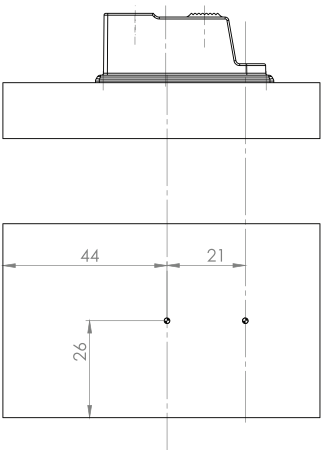
DRILLING PATTERNS  
FURAÇÃO



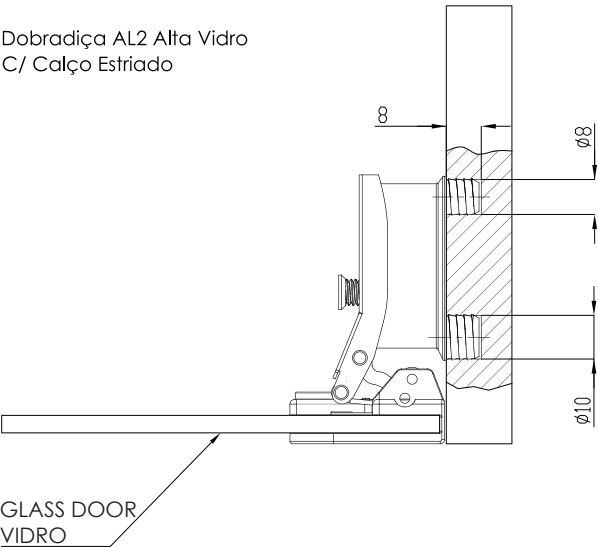
Dobradiça AL2 Vidro 45°  
C/ Calço Liso



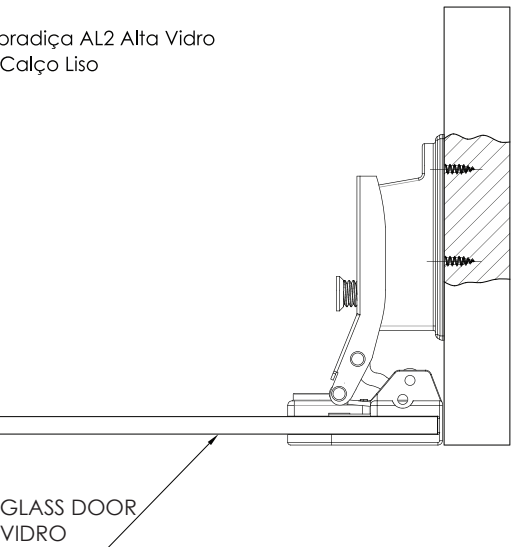
DRILLING PATTERNS  
FURAÇÃO



Dobradiça AL2 Alta Vidro  
C/ Calço Estriado



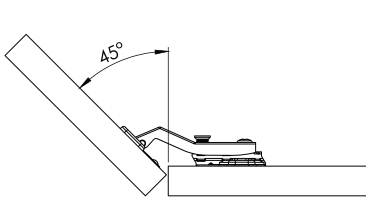
Dobradiça AL2 Alta Vidro  
C/ Calço Liso



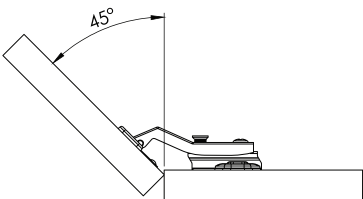
# SPECIAL HINGES FOR 45° FACE ANGLES

## DOBRADIÇAS 45°

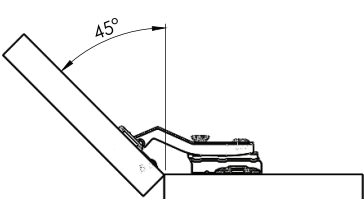
AL2 45°  
calço 3mm



AL2 45°  
calço 5mm



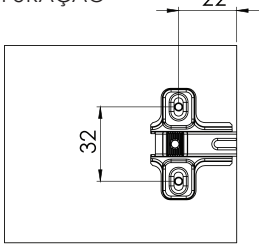
AL2 45°  
calço 7mm



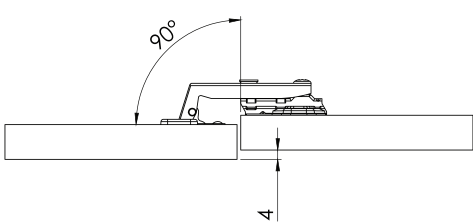
# SPECIAL HINGES FOR 90° FACE ANGLES

## DOBRADIÇAS CANTO FALSO

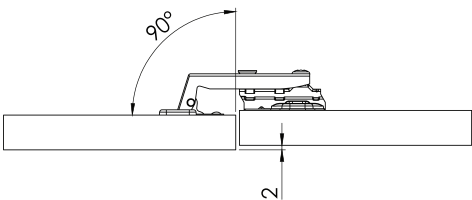
DRILLING PATTERNS (PLATE)  
FURAÇÃO



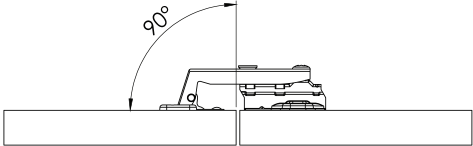
AL2 Canto Falso  
calço 3mm



AL2 Canto Falso  
calço 5mm

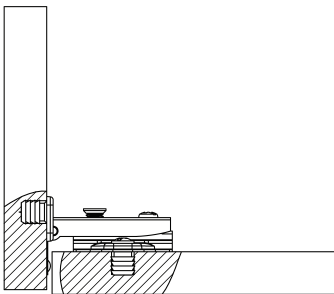
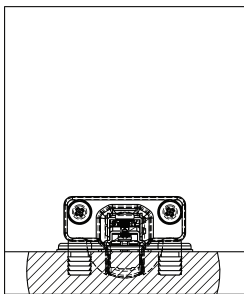


AL2 Canto Falso  
calço 7mm

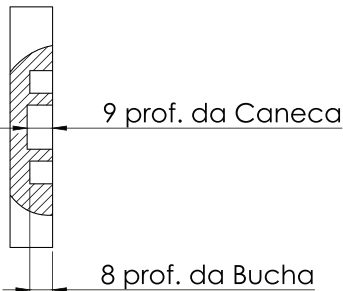
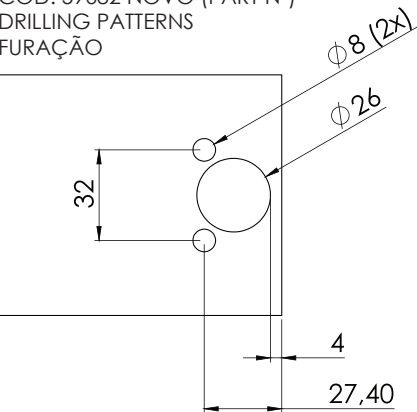


# MACHINE INSERTION READY HINGE CUP

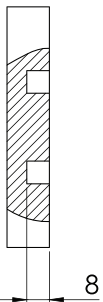
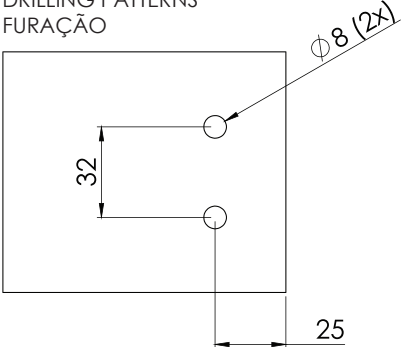
## DOBRADIÇA E CALÇO ESPECIAL PARA INSERÇÃO



COD: 59682 NOVO (PART Nº)  
DRILLING PATTERNS  
FURAÇÃO

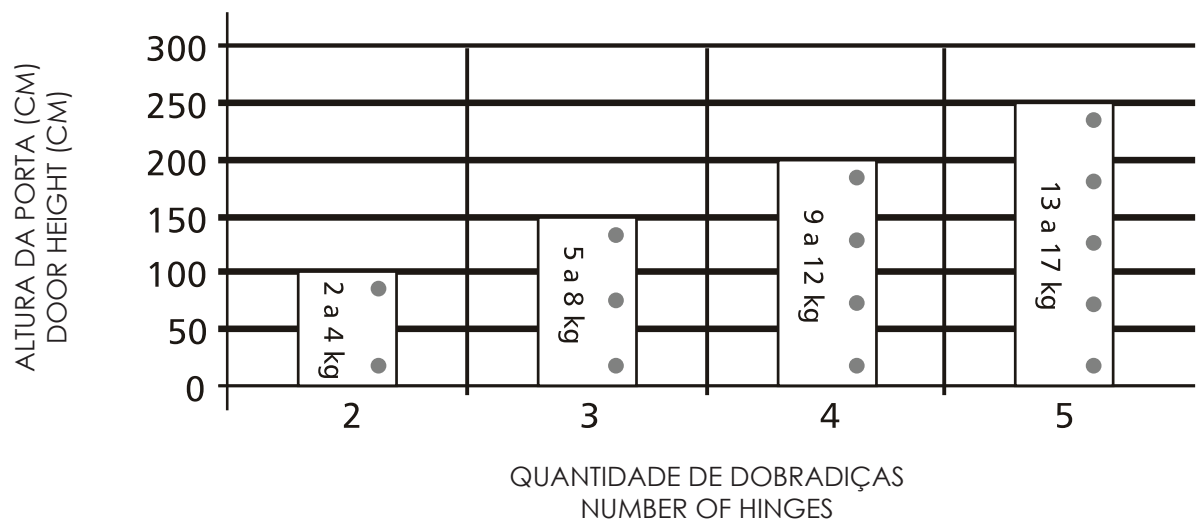


COD: 53762 NOVO (PART Nº)  
DRILLING PATTERNS  
FURAÇÃO



# QUANTIDADE DE DOBRADIÇAS POR PORTA

## NUMBER OF HINGES PER DOOR



\*O GRÁFICO TEM COMO BASE UMA PORTA DE 40CM DE LARGURA  
THE GRAPH IS BASED ON A DOOR OF 40CM WIDTH

# AJUSTE DE PORTAS

## DOOR ADJUSTMENTS

